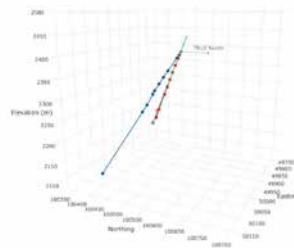


# REFLEX EZ-A™

Increased data confidence in slim hole applications. Quick and simple processing for accurate survey data.



REFLEX EZ-A™ is a digital downhole survey instrument with both single and multi-shot proficiency. With an operating core grade designed specifically to survey in A core grades, the slimline 25mm barrel can be used for various slim hole applications in all-angle surveys. With an inbuilt infrared communication link, the REFLEX EZ-A™ is able to transfer vital downhole data quickly and efficiently via a handheld computer, allowing instant, comprehensive analysis.



## Single and Multi-Shot Function

With both single and multi-shot capabilities, the REFLEX EZ-A™ has the capacity to survey from one to five single shots and up to 9,000 multi-shots depending on the desired mode.

The added gravity roll angle and magnetic tool face functions can be used with orientation wedges and directional motors. The data captured by the REFLEX EZ-A™ provides reliable, accurate, all angle surveys within the mining, exploration, and construction industries.

## All Angle Surveying

For each shot taken, three magnetic field and three gravity field components are recorded, together with temperature, time and date.

Paired with the hand held device, this allows comprehensive analysis and presentation of survey data on site. Survey data is displayed in tabular form, as well as in 2D and 3D graphical form. The 3D presentation allows the user to get a realistic view of the perspectives and offers interactive actions such as rotation and zoom.

## User Friendly

REFLEX EZ-A™ has been designed to be user friendly. The instrument has a built in interface with editable options managed by a single control switch in addition to a handheld device.

An infrared connection eliminates the need for cables. The REFLEX EZ-A™ is a digital device which immediately presents survey data without any unhealthy chemicals, time-consuming film processing, compass roses or complicated calculations.

## OPERATING FEATURES

Single and multi-shot modes  
 Inclinometer  
 Variable time delay: 5 to 32 sec  
 Self contained, battery powered

## AZIMUTH (DIRECTION)

Range 0 to 360°  
 Accuracy ± 0.35°

## ROLL ANGLE

Tool face gravity in degrees, 0 to 360°  
 Tool face magnetic in degrees, 0 to 360°

## MAGNETISM

Magnetic field strength in, nanoTelsa  
 Magnetic dip, in degrees

## PRESSURE

6,000psi (41.4 MPa) or 4,000 metre water pressure  
 without pressure barrel.  
 20,000psi (137.9 MPa) or 13,800 metre water pressure  
 with optional 36 / 38 mm pressure barrel

## OPERATING ENVIRONMENT

Full accuracy between 0°C to +60°C (+32°F to +140°F).  
 Operates to +70°C (+158°F) ambient temperature  
 without heat shield.  
 Operates to +177°C (+350°F) ambient temperature  
 with heat shield.

## SPECIFICATIONS

Storage -20°C to 85°C (-4°F to +185°F)

## SOLID STATE ELECTRONICS

Down hole electronic recording.  
 Non-volatile memory and data retention.  
 Thermal modelling for accurate calibration over the entire  
 temperature range

## DIMENSIONS

Outer diameter: 25.0mm (1.0")  
 Length: 790mm (31.126")  
 Weight: 1.7kg (1.2lbs)

## OPTIONAL EQUIPMENT

3 extension rods, each 1.5m long, 36mm O.D.  
 Landing collar (A – P sizes)  
 Pin Spear, Swivel or A rod attachment  
 Bull plug and Mule shoe  
 Pressure barrels 36 & 38mm

## HANDHELD COMPUTER

REFLEX EZ-COM™

## PC / LAPTOP

REFLEX SPROCESS™ (Windows)  
 REFLEX AQS™ communication software.

## Further Information

For more information please go to our website [www.reflexnow.com](http://www.reflexnow.com) or  
 contact your nearest REFLEX office.

### AUSTRALIA

Perth (Head Office)  
 T +61 8 9445 4020  
 Brisbane  
 T +61 7 3723 3633

### EUROPE

United Kingdom  
 T +44 1273 483 700

### AFRICA

South Africa  
 T +27 11 908 5595  
 Ghana  
 T +233 544 305 033

### MIDDLE EAST

United Arab Emirates (UAE)  
 T +971 4 449 6800

### SOUTH AMERICA

Argentina  
 T +54 9 261 211 3676  
 Brazil  
 T +55 31 3317 1398  
 Chile  
 T +56 2 2589 9300  
 Peru/Ecuador  
 T +51 1 322 8850

### NORTH AMERICA

Timmins, Canada  
 T +1 705 235 2169  
 Vancouver, Canada  
 T +1 604 681 6765  
 Mexico  
 T +52 662 215 4317