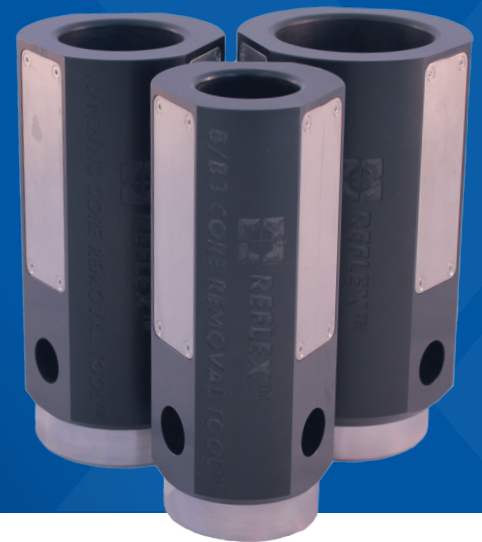


REFLEX CORE REMOVAL TOOL™

Accuracy insurance for core orientation.
Available in all core sizes.



Removing core from the innertube can be laborious, unsafe and result in damage to the core sample. The REFLEX CORE REMOVAL TOOL™ is an effective, safe and low cost alternative to traditional extraction methods. By using the tool to remove core from the drill rod, safety of the driller/operator is significantly improved through the ergonomic design and unique 'hands-free' magnetic clamping mechanism. The REFLEX CORE REMOVAL TOOL™ ensures maximum protection of the core sample and core orientation mark to preserve accuracy of the core retrieved and reduce human risk and error.

Core Sample Protection

Using the REFLEX CORE REMOVAL TOOL™ in the extraction process means the drill crew no longer need to strike the core with hammers or other hard objects in order to release it from the core lifter case.

Protecting the ends of the core sample from impact damage will result in the ability to join the ends together with greater confidence in the accuracy of the logging process. Use of the REFLEX CORE REMOVAL TOOL™ protects the core orientation markings significantly.

Increased Safety

Downtime and drill crew safety is significantly improved with reduction in flying rock chips leaving the inside of the tool. The chance of creating numerous fragments of core is significantly reduced with any fragmented sections safely captured within the tool.

The REFLEX CORE REMOVAL TOOL™ remains securely attached to the core innertube throughout the core removal process, reducing drop related injuries and injury sustained from swinging hammers against the core sample.

Ergonomic Design

The REFLEX CORE REMOVAL TOOL™ was specifically designed for driller use. The design is free of sharp edges or pinch points reducing the incident of crush injuries and impact injury is minimised when using the REFLEX CORE REMOVAL TOOL™ to remove core samples from the lifter case.

Further Information

For more information please go to our website reflexnow.com or contact your nearest REFLEX office.

AUSTRALIA

Perth (Head Office)

T +61 8 9445 4020

Brisbane

T +61 7 3723 3633

EUROPE

United Kingdom

T +44 1273 405 975

AFRICA

South Africa

T +27 11 908 5595

Ghana

T +233 544 305 033

MIDDLE EAST

United Arab Emirates (UAE)

T +971 4 449 6800

SOUTH AMERICA

Argentina

T +54 (9) 261 573 2222

Brazil

T +55 31 3317 1398

Chile

T +56 2 2589 9300

Peru

T +51 1 322 8850

NORTH AMERICA

Timmins, Canada

T +1 705 235 2169

Vancouver, Canada

T +1 604 681 6765

Mexico

T +52 662 215 4317